

# User-focused study of robot interaction methods

If you have a child who is 6-12 years old with physical special needs, especially upper-body gross and fine motor special needs, you and your child may be eligible participate in a robot design focus group

## The Social and Intelligent Robotics Research Laboratory (SIRRL) needs your help!

We are conducting an online study regarding a robot that facilitates play between children regardless of special physical needs.

We need children accompanied by their guardians (siblings and caretakers are welcome as well) to call us at the SIRRL lab at the university of waterloo in order to give feedback regarding a new state-of-the-art robot prototype and suggest improvements on it. Please note that your call will be recorded for research review only. The call will be either a phone call or virtual meeting on a conferencing software.

Participants' input and opinion will be invaluable in the final touches leading up to trials with the robot.

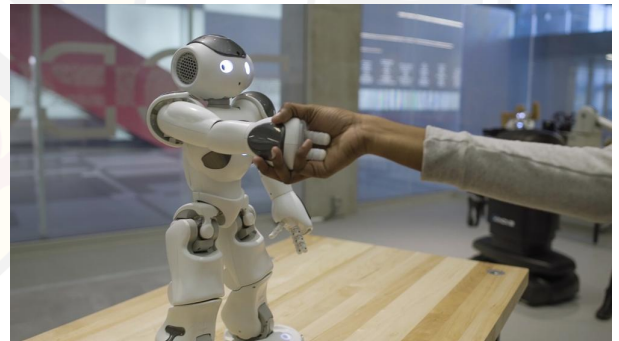
We hope this will be an exciting activity for participating children and will result in a more accessible play activities that account for their needs.

Participants will receive:

- A \$20 Tim Horton's or Walmart gift card of choice
- A tour of the SIRRL lab showcasing new and advanced social robots once the university re-opens for public

### Are you eligible?

- Have a child age between 6-12 with an upper limb fine or gross motor challenges
- Willing to spend about 30 minutes – 1 hour of your time



**If you're interested email a member of the study team:**  
[hmahdi@uwaterloo.ca](mailto:hmahdi@uwaterloo.ca)

**SIRRL** Social and Intelligent Robotics Research Laboratory